

## Fractal characteristics and wettability of Nano- $\text{Al}_2\text{O}_3/\text{Ni-Co}$ composite coating prepared by electrodeposition

LIU Yan<sup>1</sup>, LI Liang<sup>1</sup>, LU Guo-long<sup>1</sup>, HAN Zhi-wu<sup>1</sup>, LIU Jin-dan<sup>1</sup>, YU Si-rong<sup>2</sup>

1. Key Laboratory for Bionics Engineering, Ministry of Education, Jilin University, Changchun 130022, China;

2. College of Materials Science and Engineering, Jilin University, Changchun 130022, China

Received 10 May 2011; accepted 25 July 2011

**Abstract:** Nano- $\text{Al}_2\text{O}_3/\text{Ni-Co}$  composite coatings were formed on gray cast iron surface by electrodeposition method. The composite coating has a more flat surface and compact microstructure than the pure Ni-Co coating. The fractal surface structure parameters were calculated by fractal theory and the average fractal dimension is 1.3013. The contact angles were measured and the maximum value reaches  $105^\circ$ . The relationship between wettability and fractal structure was explained by Cassie–Baxter equation. The results indicate that wetting behavior varies with the fractal dimension. But the change of contact angles is not directly proportional to the fractal dimension.

**Key words:** electrodeposition; fractal; wettability; morphology

### 1 Introduction

Fractal is a novel branch in the field of nonlinear science, and it is a powerful tool to characterize many complex systems quantitatively. The concept of fractals was introduced by MANDELBROT et al [1] and subsequently used to characterize technical surfaces as significant aspects of materials science and engineering. Researchers have determined the relationship between the physical quantities and fractal dimension through the use of computer image processing technology or other methods. According to preliminary dimensional analysis, an efficient dimensionless formulation was proposed to estimate the electric and thermal contact conductances across the surface fractal dimension [2]. For describing the numerical model and the contact tests, a review of influencing factors like hardness and geometrical deviations with larger wavelengths than the roughness was given by GOERKE and WILLNER [3]. Furthermore, a statistical model used to simulate the size-scale effects on strength and toughness of brittle and quasi-brittle materials was also proposed [4–5].

Wettability between liquid and solid surface is governed by two factors, namely, the chemical

component and the geometric structure [6–7]. It has been well-known that fractal structures can effectively magnify the real surface area compared with the projected one, and then enhance the wettability of a solid surface. Since super water-repellency has attracted much attention, many methods have been employed to produce such rough surfaces [8–12].

In previous work, super water- and oil-repellent surfaces [10–11] with fractal dimension of 2.19 were made of anodically oxidized aluminum surfaces treated with fluorinated compounds of low surface energy and super water-repellent poly (alkylpyrrole) films [12] with a fractal dimension of 2.23 were electrochemically synthesized.

The water-repellent coatings were successful prepared by a composite electrodeposition process. The contact angles were measured by water liquid on the coating surfaces, and the wetting behavior varied with the fractal dimension.

### 2 Experimental

The gray cast iron samples were cut into 20 mm×20 mm×5 mm. The basic parameters of alumina were the average particle size 60 nm, the purity not less than

**Foundation item:** Project (50905071) supported by the National Natural Science Foundation of China; Project (20090539) supported by the Program for the Development of Science and Technology of Jilin Province, China; Project (20100471247) supported by the Postdoctoral Science Foundation of China; Project supported by Basicly Science Research Foundation of Key Laboratory, Ministry of Education, China

**Corresponding author:** LIU Yan; Tel: +86-431-85095760; E-mail: [liuyan2000@jlu.edu.cn](mailto:liuyan2000@jlu.edu.cn)

99.99%, and the specific surface area  $(180 \pm 10) \text{ m}^2/\text{g}$ . Watt plating solution was the earliest application and the most extensive of nickel plating solution. It consisted of three basic components, nickel sulfate, nickel chloride and boric acid.

To ensure the nanoparticles to form a homogeneous suspension in the electroplating bath, the sonication was used for 120 min. In the process of electrodeposition, the technology parameters were determined: the current density was  $40 \text{ mA}/\text{cm}^2$ , the temperature of electrolyte was  $45^\circ\text{C}$ , the content of nano- $\text{Al}_2\text{O}_3$  in electrolyte was  $20 \text{ g/L}$  (see Table 1), and the mixing was mechanical stirring together with ultrasonic vibration. The morphology of nanocomposite coating surface was observed using SEM (JSM-5500LV, Japan electronic), and the 3-D morphology was observed on a laser co-focusing microscope. The wettability of composite coating surface was determined by measuring the static contact angle of a water droplet (2–3 mm diameter) using Interface Tension/Contact Angle Measure Equipments (JC2000A, Powereach, China). The experimental temperature was  $20^\circ\text{C}$ .

**Table 1** Component of electroplating bath

| $\rho(\text{NiSO}_4 \cdot 6\text{H}_2\text{O})/$<br>( $\text{g} \cdot \text{L}^{-1}$ ) | $\rho(\text{NiCl}_2 \cdot 6\text{H}_2\text{O})/$<br>( $\text{g} \cdot \text{L}^{-1}$ ) | $\rho(\text{H}_3\text{BO}_3)/$<br>( $\text{g} \cdot \text{L}^{-1}$ ) | $\rho(\text{C}_7\text{H}_5\text{NO}_3\text{S})/$<br>( $\text{g} \cdot \text{L}^{-1}$ ) |
|--|--|--|--|
| 280  | 40   | 35   | 0.1–0.2  |

### 3 Results and discussion

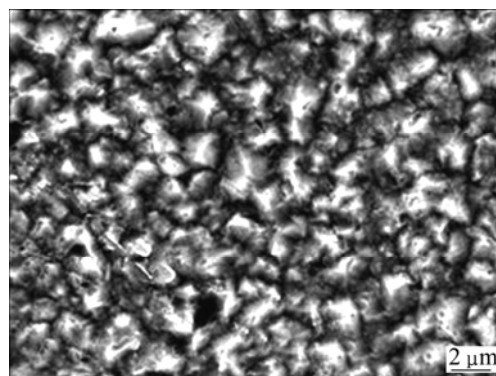
#### 3.1 Microstructure of Nano- $\text{Al}_2\text{O}_3/\text{Ni-Co}$ composite coating

Figure 1 shows SEM image of pure nickel cobalt coating, while that of Nano- $\text{Al}_2\text{O}_3/\text{Ni-Co}$  composite coating is given in Fig. 2. Compared with Ni-Co coating, the size of crystal grains in the Nano- $\text{Al}_2\text{O}_3/\text{Ni-Co}$  nanocomposite coating largely decreases due to the dimension effect of nanoparticles. Grain growth driving force is related to different curvatures of grain boundary in course of grain growth according to crystallization theory. The total driving force reduces the interfacial energy, so the grain boundary is always toward the center of curvature direction. Moreover, grain growth resorts to the large angle grain boundary migration. All the factors affecting grain boundaries migration also influence grain growth. Nickel grains normally grow in course of preparing pure Ni coating, which proximity grain boundary migrates and interconnects into a straight junction, meanwhile, the interfacial energy reaches to 0 and grain grows fully. Nanoparticles apparently obstruct grain boundary migration in preparing nanocomposite coatings. Moreover, the obstruction behaviors become obvious when the amount of particles increase and size decreases. The high active surface of nanoparticles

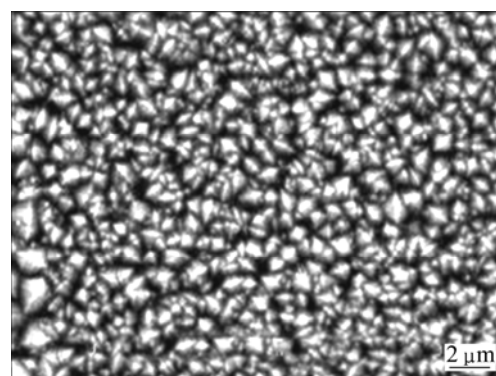
provides an amount of nucleus for Ni atoms in the electrodeposition process. The composite coating with a fine and compact microstructure was obtained because of a higher nucleation rate.

#### 3.2 Calculated fractal dimension of composite coating

For fractal characteristics analysis, 11 surface contour line data were collected, then the fractal dimensions were calculated by fractal Brownian motion method given in Table 2. At the same time, the fractal character was evaluated according to the results.



**Fig. 1** Pure nickel cobalt coating surface morphology



**Fig. 2** Nano- $\text{Al}_2\text{O}_3/\text{Ni-Co}$  composite coating surface morphology

**Table 2** Results of fractal dimension

| No. | Fractal dimension ( $D$ ) |
|-----|---------------------------|
| 1   | 1.347 8                   |
| 2   | 1.267 9                   |
| 3   | 1.223 9                   |
| 4   | 1.440 8                   |
| 5   | 1.296 9                   |
| 6   | 1.302 2                   |
| 7   | 1.291 4                   |
| 8   | 1.183 9                   |
| 9   | 1.300 6                   |
| 10  | 1.322 6                   |
| 11  | 1.336 3                   |

The surface contours data were calculated, and all the values are large than 0.99. Therefore, the composite coating has a distinct fractal character. The fractal dimension  $D$  is between 1.183 9 and 1.440 8. Moreover, an average fractal dimension is 1.301 3. The surface contour is simulated as shown in Fig. 3 by fractal Bronian method. Figure 4 shows the point cloud values of fractal dimension, and the slope is  $H$ .

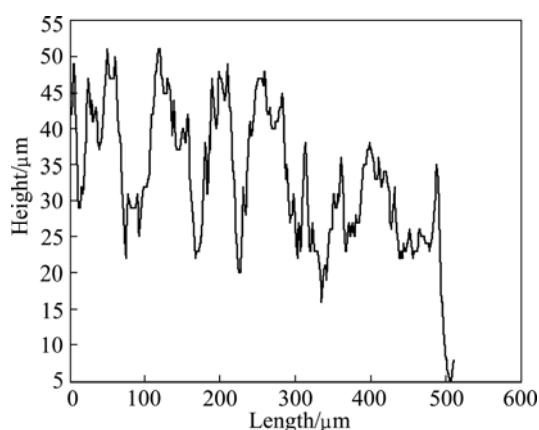


Fig. 3 Surface contour line simulated

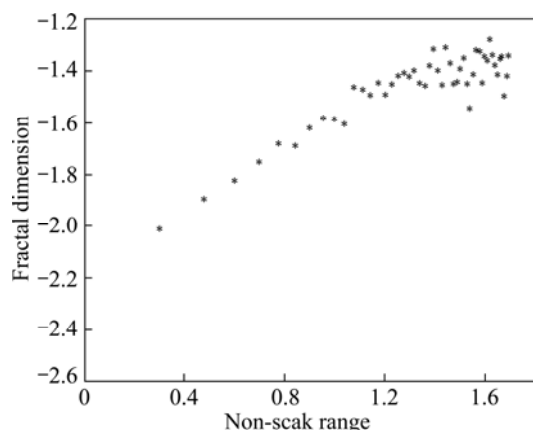


Fig. 4 Fractal image of Fig. 3

### 3.3 Wettability and fractal characteristics

Figure 5 shows the contact angle of different coatings. Surface wetting property relies on the surface structure. The wetting property of the coating is investigated by contact angle measurement. It is found that when the microscale bumps are used to form coating, the surface is highly hydrophilic with a contact angle (CA) of about  $105^\circ$ . Based on the morphology shown in Fig. 2, it is believed that the electrodeposited composite coating has many vacancies among individual nanostructures enough to trap air [13–15].

To understand the origin of the observed high hydrophobicity, the CA in terms of the Cassie–Baxter equation [16],  $\cos \theta_r = f_1 \cos \theta_0 - f_2$ , in which  $f_1$  and  $f_2$  are the fractions of solid surface and air in contact with liquid, respectively;  $\theta_r$  and  $\theta_0$  are the CAs on the

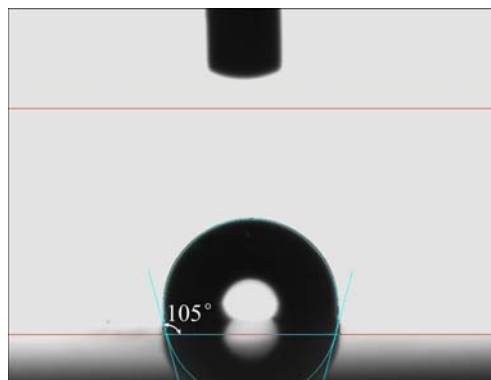


Fig. 5 Contact angle measurement at interface with NPSi film (contact angle is  $105^\circ$ )

bionic surface ( $105^\circ$ ) and on the fine and compact surface ( $43^\circ$ ), respectively. Since  $f_1 + f_2 = 1$ , and  $f_1$  is calculated to be 0.43. The low value of  $f_1$  suggests that the microscale bumps and nanoscale asperities on the surface of these bumps are responsible for the high hydrophobicity.

Furthermore, Fig. 6 shows the confocal laser scanning microscopy images of the composite electrodeposition coatings, which provides further insight into the microstructure characteristics inside of the fractal structure. When the structure of the roughness is in fractal nature, the Wenzel equation  $\theta_R = R \cos \theta$  is rewritten as [11]

$$\cos \theta_f = (L/l)^{D-2} \cos \theta \quad (1)$$

where  $L$ ,  $l$  and  $D$  are the upper and lower limits of length of the fractal (self-similar) structure and the fractal dimension, respectively [17]. The roughness factor,  $R$ , can be expressed as  $(L/l)^{D-2}$  in the case of fractal surfaces. Then, the fractal dimension of the cross section,  $D_{\text{cross}}$ , is measured by the box counting method to be 1.30 in the range between  $l=0.12 \mu\text{m}$  and  $L=26 \mu\text{m}$  (see the inset in Fig. 3), below and above the range,  $D_{\text{cross}}$  is found to be unity. Thus, the fractal dimension of the surface has

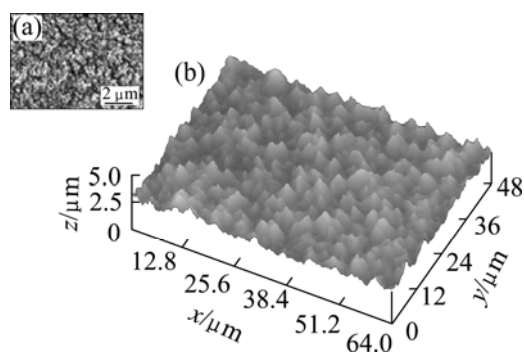


Fig. 6 LSCM measurement of morphology of composite electrodeposition film

been evaluated as  $D=D_{\text{cross}}+1=2.30$ . According to Eq. (1),  $R \approx (L/l)^{D-2}$  was calculated to be 3.342. Because some liquids show the repellent property ( $\theta_R > 90^\circ$ ) on the rough surface in spite of the wettable one ( $\theta < 90^\circ$ ) on the flat surface, this result is quite curious if the measured contact angles are the equilibrium values. The result is presumed that the difference between experimental data and theoretical calculation is due to the fractal structure formed in the deposition process rather than the roughness of substrate.

## 4 Conclusions

1) Nano- $\text{Al}_2\text{O}_3/\text{Ni-Co}$  composite coatings were successfully prepared by electrodeposition process. The surface of composite coatings is flat and the microstructure is found to be more compact than that of the pure Ni-Co coatings.

2) The fractal surface structure parameters were calculated by fractal theory, and the average fractal dimension is 1.301 3.

3) The maximum value of the contact angle reaches  $105^\circ$ . The relation between wettability and fractal structure was explained by using Cassie–Baxter equation. The wetting behavior varies with the fractal dimension. However, the variation of contact angles is not directly proportional to the fractal dimension.

## References

- [1] MANDELBORT B B, PASSOJA D E, PAULLAY A J. Fractal character of fracture surface of metals [J]. *Nature*, 1984, 308: 721–722.
- [2] PAGGI M, BARBER J R. Contact conductance of rough surfaces composed of modified RMD patches [J]. *International Journal of Heat and Mass Transfer*, 2011, 54: 4664–4672.
- [3] GOERKE D, WILLNER K. Normal contact of fractal surfaces—Experimental and numerical investigations [J]. *Wear*, 2007, 7–8: 589–598.
- [4] CARPINTERI A, CORNETTI P, PUZZI S. Size effect upon grained materials tensile strength: The increase of the statistical dispersion at the smaller scales [J]. *Theoretical and Applied Fracture Mechanics*, 2005, 44: 192–199.
- [5] CARPINTERI A, PUZZI S. The fractal-statistical approach to the size-scale effects on material strength and toughness [J]. *Probabilistic Engineering Mechanics*, 2009, 24: 75–83.
- [6] CALLIES M, QUERE D. On water repellency [J]. *Soft Matter*, 2005, 1: 55–61.
- [7] McHALE G, NEWTON M I, SHIRTCLIFFE N J. Water repellent soil and its relationship to texture and hydrophobicity [J]. *Eur J Soil Sci*, 2005, 56: 445–452.
- [8] CARPINTERI A, PUZZI S. The fractal-statistical approach to the size-scale effects on material strength and toughness [J]. *Probabilistic Engineering Mechanics*, 2009, 24: 75–83.
- [9] YAN H, KUROGI K, MAYAMA H, TSUJII K. Environmentally stable super water-repellent poly (alkylpyrrole) films [J]. *Angewandte Chemie-International Edition*, 2005, 44: 3453–3456.
- [10] TSUJII K, YAMAMOTO T, ONDA T, SHIBUICHI S. Super oil-repellent surfaces [J]. *Angew Chem Int Ed Engl*, 1997, 36: 1011–1012.
- [11] ONDA T, SHIBUICHI S, SATOH N, TSUJII K. Super-water-repellent fractal surfaces [J]. *Langmuir*, 1996, 12: 2125–2127.
- [12] YAN H, KUROGI K, MAYAMA H, TSUJII K. Environmentally stable super water-repellent poly (alkylpyrrole) films [J]. *Angewandte Chemie-International Edition*, 2005, 44: 3453–3456.
- [13] FENG L, LI S H, LI Y S, LI H J, ZHANG L J, ZHAI J, SONG Y L, LIU B Q, JIANG L, ZHU D B. Super-hydrophobic surfaces: From natural to artificial [J]. *Advanced Materials*, 2002, 14: 1857–1860.
- [14] TADANAGA K, MORINAGA J, MATSUDA A, MINAMI T. Superhydrophobic-superhydrophilic micropatterning on flowerlike alumina coating film by the sol-gel method [J]. *Chemistry of Materials*, 2000, 12: 590–592.
- [15] PACIFICO J, ENDO K, MORGAN S, MULVANEY P. Superhydrophobic effects of self-assembled monolayers on micropatterned surfaces: 3-D arrays mimicking the lotus leaf [J]. *Langmuir*, 2006, 22: 11072–11076.
- [16] CASSIE A B D, BAXTER S. Wettability of porous surfaces [J]. *Transactions of the Faraday Society*, 1944, 40: 546–551.
- [17] KUROGIA K, YAN H, TSUJII K. Importance of pinning effect of wetting in super water-repellent surfaces [J]. *Colloids and Surfaces A*, 2008, 317: 592–597.

# 电沉积 Nano- $\text{Al}_2\text{O}_3/\text{Ni-Co}$ 复合涂层的分形特征及润湿性

刘 燕<sup>1</sup>, 李 亮<sup>1</sup>, 卢国龙<sup>1</sup>, 韩志武<sup>1</sup>, 刘金丹<sup>1</sup>, 于思荣<sup>2</sup>

1. 吉林大学 工程仿生教育部重点实验室, 长春 130022;

2. 吉林大学 材料科学与工程学院, 长春 130022

**摘 要:** 采用电沉积的方法在灰铸铁表面制备了 Nano- $\text{Al}_2\text{O}_3/\text{Ni-Co}$  复合镀层。与纯镍涂层相比, 复合镀层表面平整、细致。运用分形原理计算了分形表面的结构参数, 分形维数为 1.301 3。测量了接触角, 其最大值达到  $105^\circ$ 。运用 Cassie–Baxter 方程解释了润湿性与分形结构的关系。结果表明: 随着分形维数的变化润湿角而变化, 但是接触角的变化与分形维数的比率并不呈现线性关系。

**关键词:** 电沉积; 分形; 润湿性; 形貌

(Edited by LI Yan-hong)